

TOPIIMPLANT



Product Catalog Scanbody



Make Implant Restoration Easier

Contents

Company Profile **01**

About Us 01

Company Mission and Vision 03

Product Introduction **05**

Intraoral Scanbody 05

Tool 16

Intraoral Scanbody Kit 16

Healing Scanbody 17

Multi-Unit Scanbody 19

About Us

Topimplant Technology (Shenzhen) Co., Ltd is a dental implant accessories and CAD/CAM digital solution provider with a registered capital of 15 million yuan. Established in 2022 and located in Bao'an District, Shenzhen City, Guangdong Province, the predecessor of the company is the CAD/CAM digital center of Palmary Medical, which has been focusing on the field of dental implant accessories processing for 9 years. It has more than 20 processing and testing equipment, such as Willemin and Citizen. The main products include Analogs, Scanbodies, Impression Copings, Screws, Sleeves, Screwdrivers, Torque Wrenches, and various dental implant accessories.

Topimplant regards product quality as its life and focuses on building an automated inspection assembly line to ensure 100% inspection of product appearance and screws, ensuring product quality and stability. Insisting on industry-university-research cooperation, it has senior experts with more than 20 years of experience in the field of CNC machining. Over the years, in collaboration with the Engineering Training Center of South China University of Technology and Longjiang Vocational and Technical College, hundreds of CNC machining talents have been trained for the country. The company mission is "make implant restoration easier," with automation, intelligence, and digitalization as the development direction, focusing on the frontier problems of domestic implant restoration, and addressing the key common problems of current oral implant procedures.

Topimplant has always adhered to a restoration-oriented approach, committed to bringing better products and comprehensive solutions to our customers, and providing quality services to create more value.



2015

Established a CNC machining center, purchased the five-axis linkage machine from WILLEMIN-MACODEL, and became the first enterprises to use sophisticated WILLEMIN-MACODEL machine tools to manufacture implant accessories.

2017

First purchased the CNC precision automatic lathe of CITIZEN, and became a company, manufacturing implant accessories with both WILLEMIN-MACODEL and CITIZEN machine.

2020

In 2020, the company has developed more than 1,000 types of implant accessories covering more than 60 implant systems, including European, Korean, and American system.

2022

Topimplant Technology (Shenzhen) Co., Ltd. was established independently from the Sanzhuan Medical in 2022. The registration of level III CFDA certification, such as premill abutment, customized abutment, customized multi-unit abutment, screw retained bridge and screw retained bar, have been fully launched.

2024

In 2024, we obtained the registration certificate of customized abutment and accessories and premilled blank in China.



Company Mission And Vision

Vision

Becoming the world's top dental implant componentry processing center

Mission

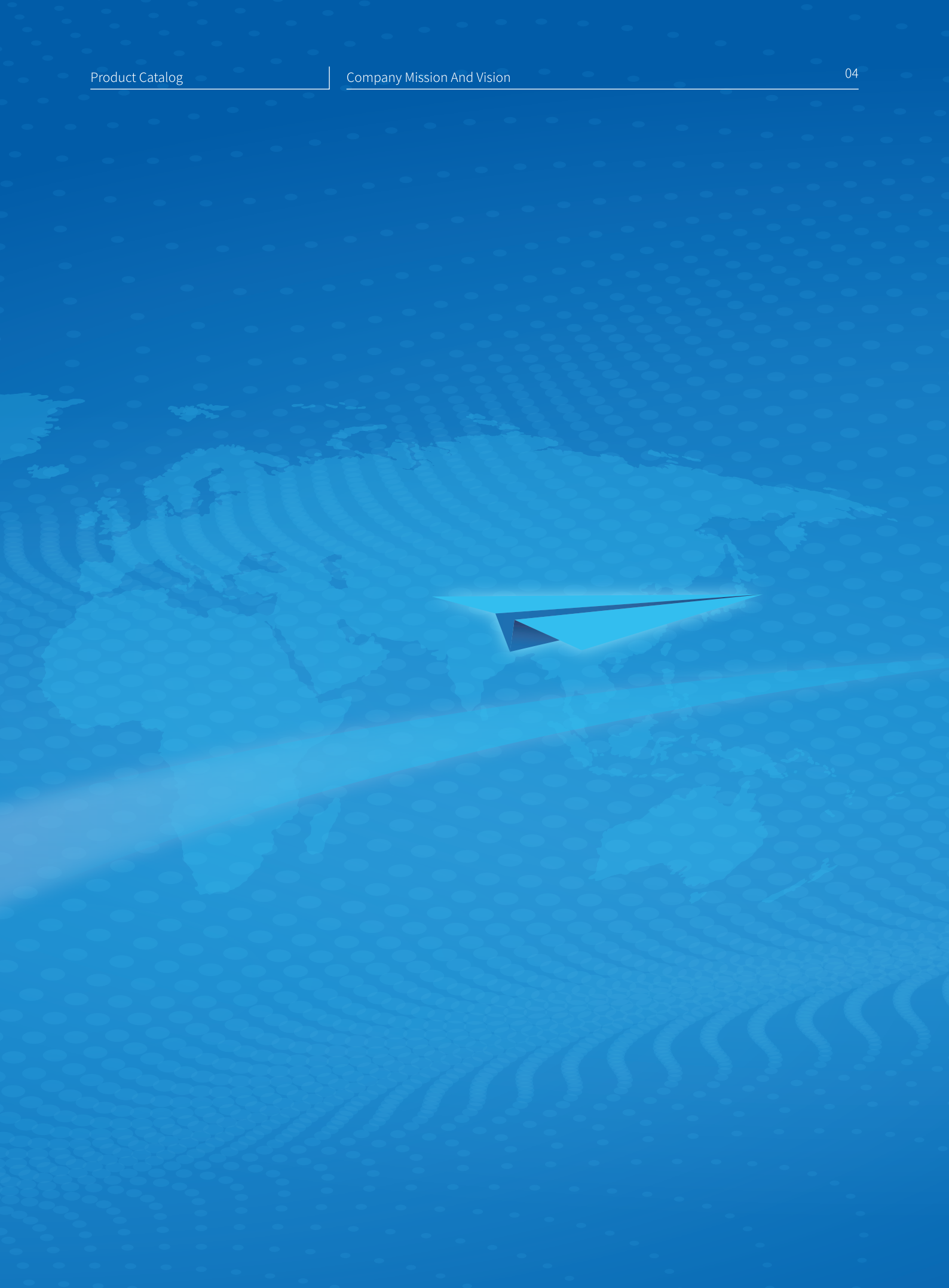
Make Implant Restoration Easier

Core Values

Create value for customers

Striving for excellence

Self-reflection, Innovation, Honesty & Integrity, Collaboration



Intraoral Scanbody

Optimized design

- The unique groove is convenient for doctors to confirm the position of the scanbody. The length of the scanbody is optimized, and there is only one specification, which reduces the cost.

Diversity of materials

- Two kinds of materials are provided to meet the different needs of customers, including durable PEEK material combined with titanium alloy interface and titanium alloy material with integral SLA surface treatment.

Quick identification

- Through the laser marking on the scanbody and the color code of the central screw, the implant system and specification model can be quickly and accurately identified.

Integrated Tools

- Our scanbody feature an integrated unified screw-driver and carrying handle for ease of use, allowing for tool-free installation and easy screwing into intraoral implants.

Seating Confirmation

- When the scanbody is in place, the physician can confirm its position by feeling for the direction of anti-rotation and checking that the end face is flush with the central screw.

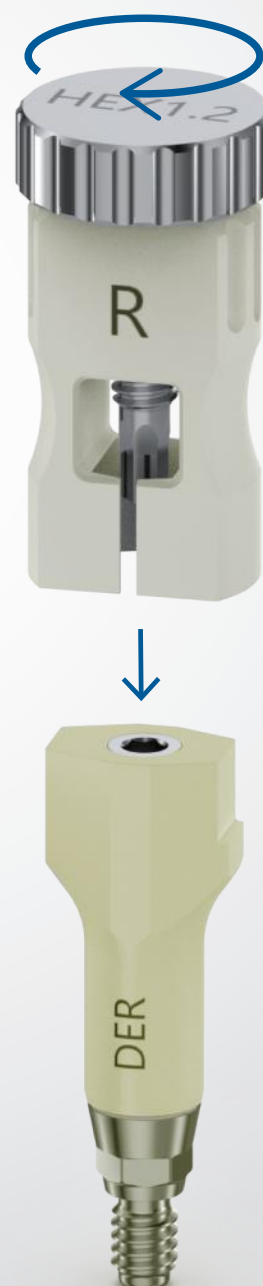
Unique shape

- The shape of our scan body is unique design, which ensures that it matches the structure of the oral cavity and improves the scanning accuracy.

Applicable software

3shape
exocad

Downloadable on
www.topimplant.cn



Intraoral Scanbody

Implant Brand	Specification	Platform	Art. No	Library code
Dentium	SuperLine	■ Regular	IO DER	TP01
	NR Line	■ 3.1/3.6/4.3/5.0	IO DNR	
	Simple Line	■ 4.8	IO DSR	
		■ 6.5	IO DSW	
OSSTEM / Hiossen	TS/ET	■ Mini	IO OTM	TP02
		■ Regular	IO OTR	
	SS	■ Regular	IO OSR	
		■ Wide	IO OSW	
	US	■ Mini	IO OUM	
		■ Regular	IO OUR	
		■ Wide	IO OUW	
MegaGEN	EZ Plus	■ Mini	IO MEM	TP03
		■ Regular/Wide	IO MER	
	MiNi	■ 3.0	IO MM3	
	AnyOne	■ Regular	IO AOR	
	AnyRidge	■ 3.5/4.0/4.25/4.5/5.0	IO MAR	
	ST	■ Mini	IO MSS	
		■ Standard	IO MSM	
Cortex	Internal Hex	■ Regular	IO CTX	TP04
	Conical Platform	■ NP	IO CCN	
		■ RP	IO CCR	
		■ WP	IO CCW	

Intraoral Scanbody

Implant Brand	Specification	Platform	Art. No	Library code
BEGO	S/RI/PS/SB/SBX/RS/R SX/RI	■ 3.25/3.75	IO BGM	TP05
		■ 4.1	IO BGS	
		■ 4.5	IO BGL	
		■ 5.5	IO BGW	
DIO	SM(TORX)	■ Narrow	IO DSN	TP06
		■ Regular/Wide	IO DSR	
	UF(II)	■ Narrow	IO DUN	
		■ Regular/Wide	IO DUR	
Straumann	Bone Level	■ SC	IO SBS	TP07
		■ NC	IO SBN	
		■ RC	IO SBR	
	Tissue Level	■ NNC	IO SSC	
		■ NN	IO SSN	
		■ RN	IO SSR	
		■ WN	IO SSW	
	BLX	■ RB/WB	IO BLX	
Bicon	/	■ 2.0	IO BC20	TP08
		■ 2.5	IO BC25	
		■ 3.0	IO BC30	
DENTIS	S-Clean	■ Narrow	IO DTS N	TP09
		■ Mini	IO DTS M	
		■ Regular	IO DTS R	

Implant Brand	Specification	Platform	Art. No	Library code
Zimmer	TSV	■ 3.5	IO ZTG	TP10
		■ 4.5	IO ZTP	
		■ 5.7	IO ZTY	
	Tapered Swiss Plus	■ 4.8	IO ZRN	
	Spline	■ 3.25	IO ZSN	
		■ 3.75/4.0	IO ZSR	
		■ 5.0	IO ZSW	
	Azure C-System	■ S	IO AZS	
		■ L	IO AZL	
MIS	SEVEN	■ NP	IO M7N	TP11
		■ SP	IO M7S	
		■ WP	IO M7W	
	C1	■ NP	IO C1N	
		■ SP	IO C1S	
		■ WP	IO C1W	
Anthogyr	Axiom BL	■ BL	IO AOM	TP12
		■ 2.8	IO AOM28	
Nobel Biocare	Replace	■ NP	IO NRN	TP13
		■ RP	IO NRR	
		■ WP	IO NRW	
	Active	■ 3.0	IO NA3	
		■ NP	IO NAN	

Intraoral Scanbody

Implant Brand	Specification	Platform	Art. No	Library code
Nobel Biocare	Active	 RP	IO NAR	TP13
		 WP	IO NAW	
	Branemark	 NP	IO NBN	
		 RP	IO NBR	
		 WP	IO NBW	
Neoss	ProActive	 3.25	IO NSN	TP14
		 3.5	IO NSR	
Dentsply	Astra OsseoSpeed TX	 3.0	IO DA3	TP15
		 Narrow(3.5/4.0)	IO DAS	
		 Regular(4.5/5.0)	IO DAL	
	Astra EV	 3.0	IO AEG	
		 3.6	IO AEP	
		 4.2	IO AEY	
		 4.8	IO AEB	
		 5.4	IO AE5	
	Ankylos	 C/	IO ANK C/	TP16
		 /X	IO ANK /X	
	Xive	 3.0	IO DX3	TP17
		 3.4	IO DXG	
		 3.8	IO DXY	
		 4.5	IO DXB	
		 5.5	IO DXR	

Implant Brand	Specification	Platform	Art. No	Library code
CAMLOG	Camlog	■ 3.3	IO CCG	TP18
		■ 3.8	IO CCY	
		■ 4.3	IO CCP	
		■ 5.0	IO CCB	
		■ 6.0	IO CC6	
	isy	■ 3.8/4.4/5.0	IO ISY	
CAMLOG	Conelog	■ 3.3	IO CON33	TP19
		■ 3.8/4.3	IO CON38/43	
		■ 5.0	IO CON50	
BIOMET 3i	Certain	■ 3.4	IO BCP	TP20
		■ 4.1	IO BCB	
		■ 5.0	IO BCY	
		■ 6.0	IO BCG	
Medentis Medical	ICX	■ 3.3	IO ICX33	TP21
		■ Regular	IO MIC	
SIC	Internal Hex	■ 3.3	IO SHB	TP22
		■ 4.2	IO SHP	
Neobiotech	ISIS/IS II/IS-II Active	■ Narrow	IO NEN	TP23
		■ Regular/Wide	IO NER	
		■ Wide	IO NEW	
B&B DENTAL	Internal Hex	■ Mini	IO BBM	TP24
		■ Regular	IO BBR	

Intraoral Scanbody

Implant Brand	Specification	Platform	Art. No	Library code
C-TECH	Narrow/EstheticLine	■ EL	IO CTE	TP25
		■ ND	IO CTN	
Alpha-BioTec	IH	■ 3.3/3.75/4.2/5.0	IO ABT	TP26
	CHC	■ 3.2/3.5	IO CHC	
	CS	■ 3.75/4.2/5.0	IO CS	
Biodenta	Bone Level	■ B0	IO BDT-B0	TP27
		■ B1	IO BDT-B1	
		■ B2	IO BDT-B2	
ImplantDirect	InterActive	■ 3.0	IO IDA30	TP28
		■ 3.4	IO IDA34	
	Legacy	■ 3.0	IO IDL30	
		■ 3.5	IO IDL35	
		■ 4.5	IO IDL45	
		■ 5.7	IO IDL57	
AB-dent	Two Piece	■ Standard	IO ABS	TP29
		■ Narrow	IO ABN	
Adin	RS	■ Regular	IO ARS	TP30
	CloseFit	■ UNP	IO ACU	
		■ NP	IO ACN	
		■ RP	IO ACR	
		■ WP	IO ACW	

Implant Brand	Specification	Platform	Art. No	Library code
BioHorizons	Internal Hex	■ 3.0	IO BIOH-IH30	TP31
		■ 3.5	IO BIOH-IH35	
		■ 4.5	IO BIOH-IH45	
		■ 5.7	IO BIOH-IH57	
	External Hex	■ 3.7	IO BIOH-EH37	
		■ 4.2	IO BIOH-EH42	
		■ 5.2	IO BIOH-EH52	
		■ 6.2	IO BIOH-EH62	
CLC	CONIC	■ Regular	IO CCR	TP32
Bredent	SKY	■ 3.5N/4.0/4.5/5.5	IO SKY	TP33
Ritter	Snap SB/LA	■ Narrow	IO RSN	TP34
		■ Standard	IO RSS	
SG	SST/SRT	■ Narrow	IO SGN	TP35
		■ Regular	IO SGR	
		■ Wide	IO SGW	
		■ Wide6.0	IO SG6	
Ticare(MG)	Inhex Quattro	■ MINI	IO MGM	TP36
		■ STD	IO MGR	
		■ MAXI	IO MGW	
Keystone	Genesis	■ 3.5/3.8	IO KGM	TP37
		■ 4.5	IO KGR	

Intraoral Scanbody

Implant Brand	Specification	Platform	Art. No	Library code
Keystone	Genesis	■ 5.5/6.5	IO KGW	TP37
	Prima(TiLobe)	■ SD	IO KPS	
		■ RD	IO KPR	
		■ WD	IO KPW	
Thommen	SPI	■ 3.5	IO TSY	TP38
		■ 4.0	IO TSG	
		■ 4.5	IO TSB	
		■ 5.0	IO TSW	
		■ 6.0	IO TSP	
Mytis Arrow	One-Stage	■ Normal	IO MAN	TP39
		■ Wide	IO MAW	
HumanTech	RatioPlant	■ Mini	IO HTM	TP41
		■ Regular	IO HTR	
		■ Wide	IO HTW	
TBR	Z1	■ Mini	IO TZM	TP42
		■ Infinity/8	IO TZ8	
	Bone Level	■ Mini	IO TBM	
		■ Infinity/8	IO TB8	
Anker	Bone Level	■ Narrow	IO ABN	TP43
		■ Standard	IO ABS	
	Tissue Level	■ NN	IO ATN	
		■ RN	IO ATR	


Implant Brand	Specification	Platform	Art. No	Library code
Anker	Tissue Level	■ WN	IO ATW	TP43
Neodent	GM	■ 3.5/3.75/4.0/4.3/5.0/6.0	IO NGM	TP44
	CM	■ 3.5	IO NCM	
		■ 4.3	IO NCR	
		■ 5.0	IO NCW	
WEGO	/	■ Mini	IO WGM	TP45
		■ Regular	IO WGR	
JD	JDEvolution Plus	■ JDE	IO JDE	TP46
BlueSkyBio	MAX	■ NP	IO BMN	TP47
Kyocera	Bone Level	■ NP	IO KBN	TP49
		■ RP	IO KBR	
		■ WP	IO KBW	
Global D	In-Kone	■ Regular	IO GDI	TP50
EBI	BLT	■ Mini	IO EBM	TP51
		■ Regular	IO EBR	
	Tissue Level/Precision/Octa	■ Internal Octa4.8	IO EBT	
DYNA	Helix	■ 3.2	IO DHW	TP52
		■ 3.6	IO DHG	
		■ 4.2	IO DHB	
		■ 5.0	IO DHY	
LASAK	BioniQ/BioniQ Plus	■ 2.9	IO LBY	TP53
		■ 3.5	IO LBB	

Intraoral Scanbody

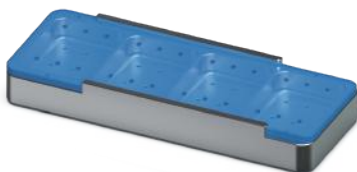
Implant Brand	Specification	Platform	Art. No	Library code
LASAK	BioniQ/BioniQ Plus	■ 4.0	IO LBG	TP53
		■ 5.0	IO LBP	
Paltop	Internal Hex	■ Narrow	IO PIN	TP54
		■ Standard	IO PIS	
		■ Wide	IO PIW	
Shinhung	Luna	■ NP	IO SLN	TP55
		■ RP	IO SLR	
Warantec	IT	■ Regular	IO WIT	TP56
	IU	■ Mini	IO WUN	
		■ Regular	IO WUR	
COWELL INNO	Submerged	■ Mini	IO INM	TP57
		■ Regular	IO INR	
SNUC	AF	■ Mini	IO SNM	TP58
		■ Regular	IO SNR	
ZUGA	Bone Level	■ 3.5/4.3/5.0	IO ZGB	TP59
Biotech Dental	Kontakt	■ 3.0	IO BT3	TP60
		■ 3.6/4.2/4.8/5.4	IO BTH	
	WeegoFR	■ 3.6/4.2/4.8	IO BTWG	
DENTIN	Class/Rapid/Prestige	■ 3.3/3.8/4.2/5.0/6.0	IO DTY	TP61
Biotem	AR	■ Narrow	IO BTN	TP62
		■ Regular	IO BTR	
SGS	P5D/P5G/P1D/P7D	■ Regular	IO SGS R	TP63

Implant Brand	Specification	Platform	Art. No	Library code
Sweden & Martina	Premium	3.3	IO SM300	TP64
		3.8	IO SM380	
		4.25	IO SM425	
		5.0	IO SM500	
Intralock	Internal Hexagon	3.5	IO ILK35	TP65
Bio3	ADVANCED	Standard	IO B3S	TP66
		Wide	IO B3W	
GMI	Avantgard	NP	IO GAN	TP67
		RP	IO GAR	
		WP	IO GAW	
IML	UNIVERSE	NP	IO MLN	TP68
		RP	IO MLR	

Tool

Product Name	Picture	Specification	Comment
Intraoral Scanbody Carrier		Regular Mini	The integrated unified screw-driver and carrying handle make operation easier and can be installed and easily screwed into the intraoral implant without the need for other tools

Intraoral Scanbody Kit



Healing Scanbody

- The product offers more selectable types, allowing the choice of diameter and gingival height based on the implant conditions;
- Easy to use, with more intuitive product type identification features;
- Identification diameter and height by scanning upper features;
- Anti-rotation structure design with separation from the screw for implant position recording;
- Intra-oral scanning or Intra-oral impression.

Applicable software

3shape
exocad

Downloadable on
www.topimplant.cn



01 Special screwdriver

02 Gingival height identification laser marked features

03 Fixture Platform

Scanbody Carrier 04

Scanbody Diameter 05

06

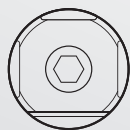
Anti-rotation direction laser marked



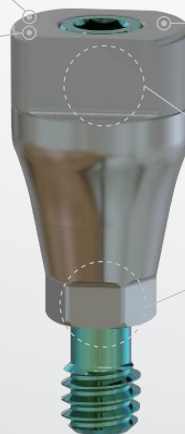
G/H 3.0mm



G/H 5.0mm



G/H 7.0mm



Diameter	G/H 3.0	G/H 5.0	G/H 7.0
<div>Ø4.5</div> <div>M</div>	<div></div> <div></div> <div>M453</div>	<div></div> <div></div> <div>M455</div>	<div></div> <div></div> <div>M457</div>
Diameter	G/H 3.0	G/H 5.0	G/H 7.0
<div>Ø4.5</div> <div>R</div>	<div></div> <div></div> <div>R453</div>	<div></div> <div></div> <div>R455</div>	<div></div> <div></div> <div>R457</div>
Diameter	G/H 3.0	G/H 5.0	G/H 7.0
<div>Ø5.5</div> <div>R</div>	<div></div> <div></div> <div>R553</div>	<div></div> <div></div> <div>R555</div>	<div></div> <div></div> <div>R557</div>

Multi-Unit Scanbody

- **Optimized structure**

Our product has been carefully designed, and the bridge is in good place, Customers will have a good use experience.

- **Screw design**

We specially designed the built-in screws to avoid the problem of screw loss and improve the reliability and convenience of the product.

- **Accuracy of manufacture**

We strictly control each manufacturing step to ensure product accuracy of $\pm 5\mu\text{m}$

- **Identification marking**

We use laser marking on our products, which is clear and easy to identify, convenient for users to identify and operate.

- **Scanning data**

By optimizing the processing algorithm of scanning data, we improve the matching degree of data and ensure that accurate location data is obtained.

Applicable software

3shape
exocad

Downloadable on
www.topimplant.cn



Multi-Unit Scanbody

Implant Brand	Specification	Product description	Art. No	Library code
Dentium	SuperLine	Screw Abutment 4.5	DT45	TP01
		Screw Abutment 5.5	DT55	
Osstem	GS/TS	Multi unit	OST	TP02
		Convertible Abutment Mini/Regular Ø4.0	CA40	
		Convertible Abutment Regular Ø5.0	CA50	
		Convertible Abutment Regular Ø6.0	CA60	
MegaGEN	AnyOne/AnyRidge	N-Type	MGG-N	TP03
		S-Type	MGG-S	
Cortex	Internal Hex	Multi-Unit Hex Abutments	CTX	TP04
BEGO	/	Multi Plus	BG	TP05
DIO	UF(II)	4.8	UF48	TP06
Straumann	/	Screw-retained Abutment NC Ø3.5	SRA3.5*	TP07
		Screw-retained Abutment NC Ø3.5 Single Crown	SRA3.5	
		Screw-retained Abutment NC/RC Ø4.6	SRA4.6*	
		Screw-retained Abutment NC/RC Ø4.6 Single Crown	SRA4.6	
		SynOcta RN Abutment	RN	
		SynOcta WN Abutment	WN	
		Multibase NC Ø3.5	MB35	
		Multibase NC/RC Ø4.5	MB45	
		Multibase RC Ø6.5	MB65	
Bicon	/	Fixed-Detachable Abutments	BC	TP08
Dentis	S-Clean	MU Abutment System	DTS	TP09

Multi-Unit Scanbody

Implant Brand	Specification	Product description	Art. No	Library code
MIS	SEVEN	Ø4.8	MIS	TP11
Anthogyr	Axiom BL/TL	Ø4.0mm MULTI-UNIT RANGE	ANT40	TP12
		Ø4.8mm MULTI-UNIT RANGE	ANT48	
Nobel Biocare	Active/Replace /Branemark	MU-NP/RP	NB	TP13
		MU-NP/RP Plus	NB V2	
		MU-WP	NBW	
Neoss	ProActive	Access Abutment	NES	TP14
Dentsply	Astra TX	Uni Abutment 20°	AT20	TP15
		Uni Abutment 45°	AT45	
	Astra EV	Uni Abutment EV 33°	AE33	
		Multibase	AEB	
	Ankylos	4.2	ANK	TP16
	Xive	TG	DXV	TP17
Camlog	COMFOUR	Ø4.3	COM43	TP18
		Ø6.0	COM60	
BIOMET 3i	Certain	Single and multi-unit screw-retained Restorations	3i	TP20
SIC	SICace/SICmax/SICtapered	Safe on Four	SIC	TP22
Neobiotech	IS	Ø4.8	NEO	TP23
BB-dent	/	MULTI-USE ABUTMENTS	BB	TP24
Alpha-BioTec	IH	Multi Unit Abutment System	ABT	TP26
AB-dent	/	single unit	AB	TP29
Adin	RS	TMA	ARS	TP30

Implant Brand	Specification	Product description	Art. No	Library code
Ticare(MG)	Inhex	4.0, 10°	MG10	TP36
		4.0, 30°	MG30	
		4.8, 20°	MG20	
Neodent	GM	Ø4.8	NGM	TP44
Kyocera	Bone Level	4.8	KYC	TP49
Warantec	IU	Ø4.0 Hex	WR40H	TP56
		Ø5.0 Hex	WR50H	
		Ø4.0 Non-Hex	WR40NH	
		Ø5.0 Non-Hex	WR50NH	
COWELL	INNO	Ø4.5	CWN45	TP57
		Ø5.5	CWN55	

TOPIMPLANT

Aidite DentalGroup

☎ (+86 China) 188-3358-0801 (WeChat)

✉ sales@topimplant.cn | info@topimplant.cn

🌐 www.topimplant.cn

📍 Room 138 Building A1, Area A, Fuhai International Science and Technology Park,
No. 306, Qiaohe Road, Heping Community, Fuhai Street, Bao'an District, Shenzhen



Focus more...